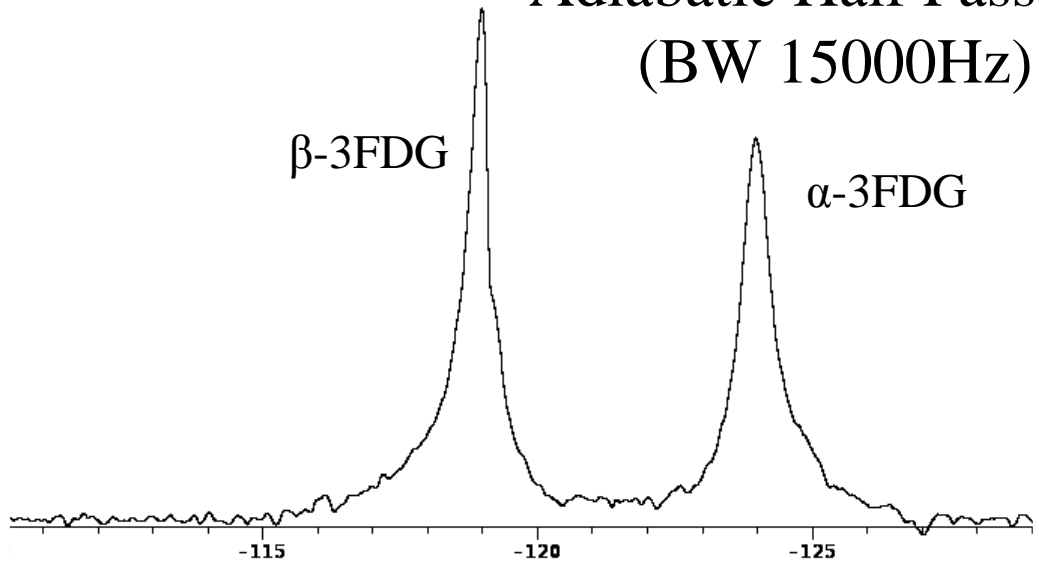


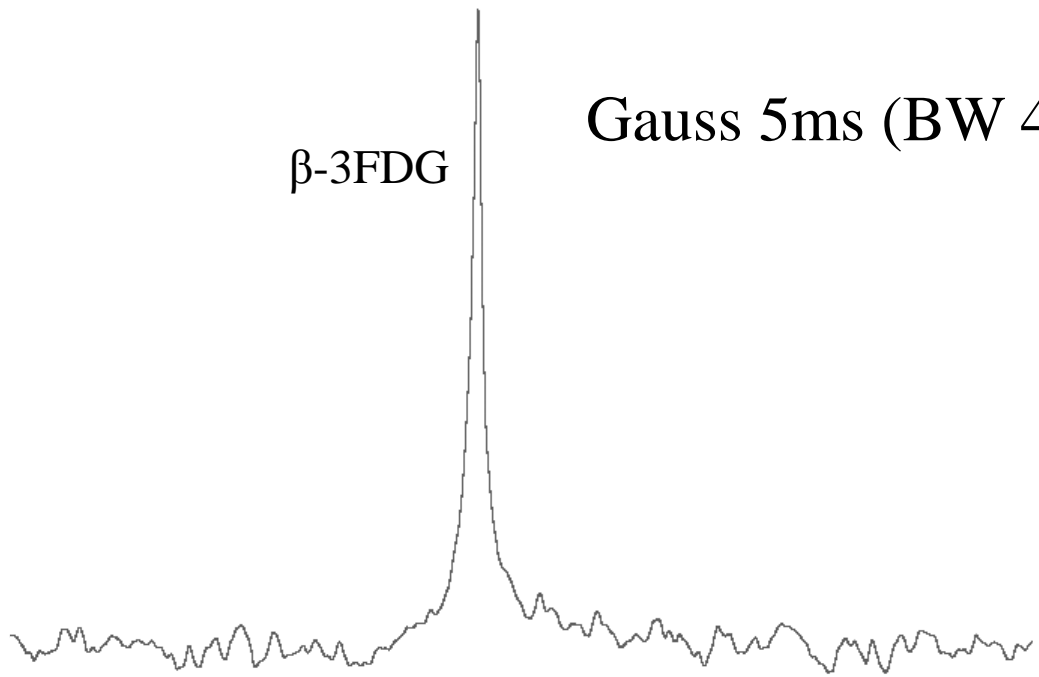
(a)

Adiabatic Half Passage (BW 15000Hz)



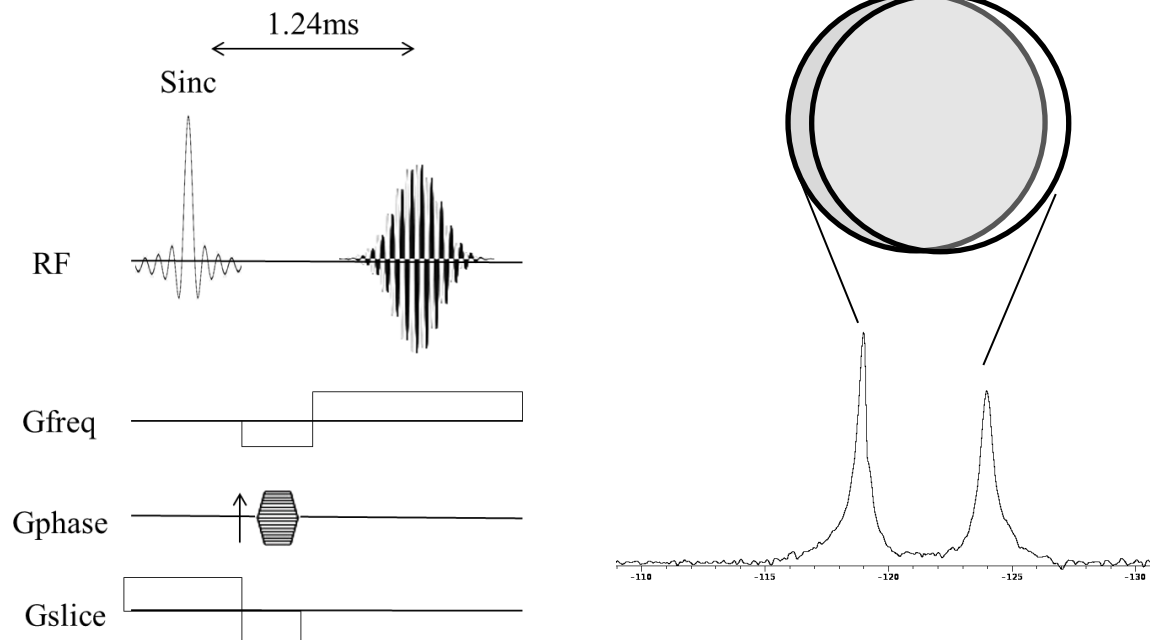
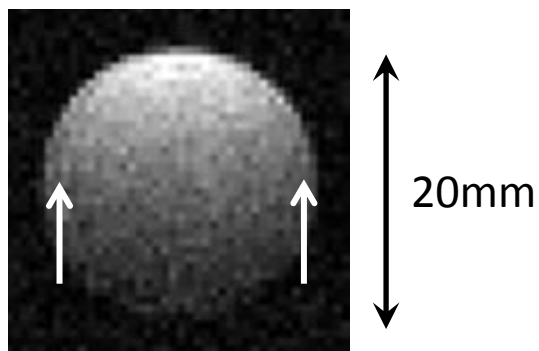
(b)

Gauss 5ms (BW 420Hz)



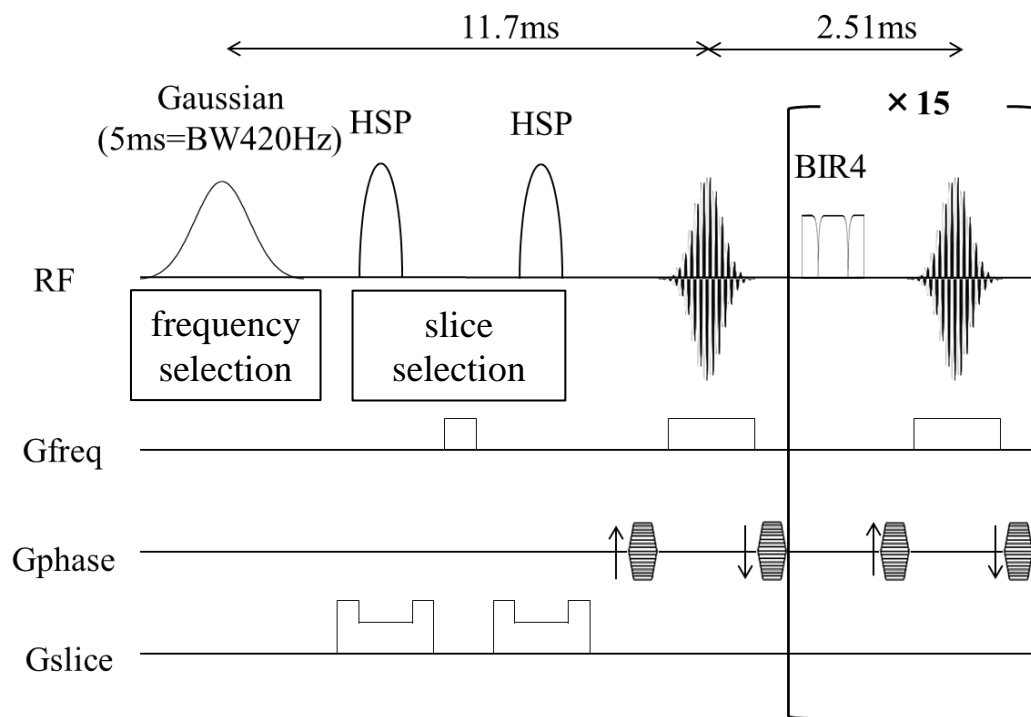
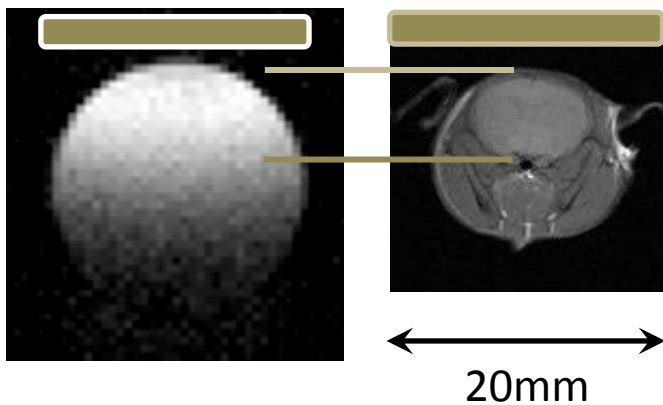
2

(a) Gradient Echo



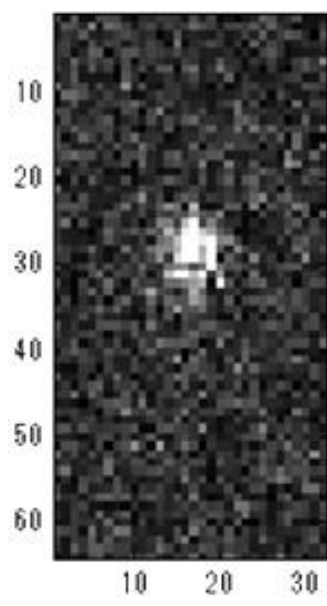
(b) Adiabatic Fast Spin Echo

Surface Coil

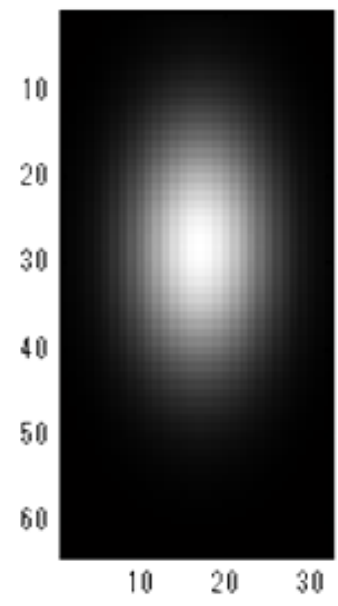


3

raw K-space

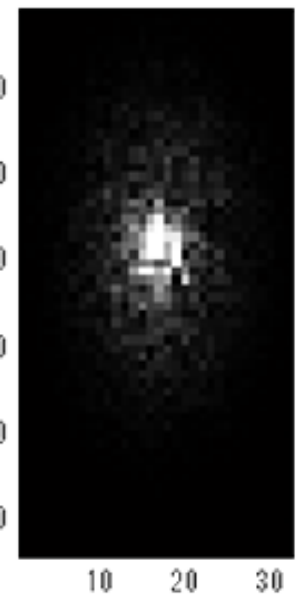


Gaussian Kernel

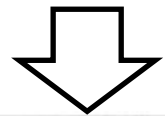
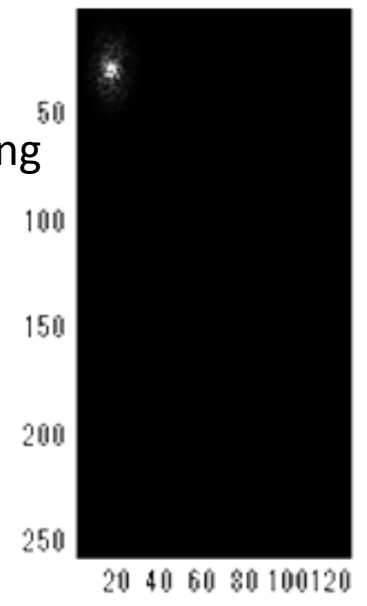
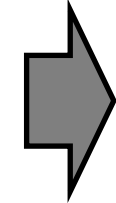


X

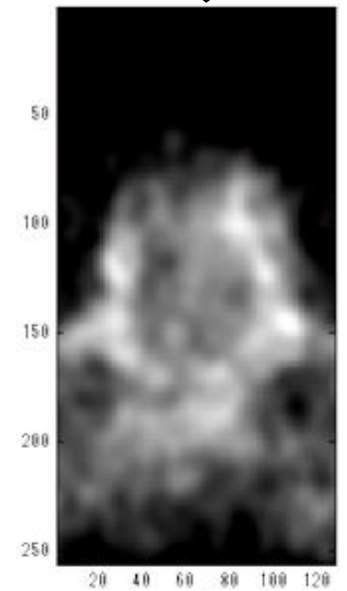
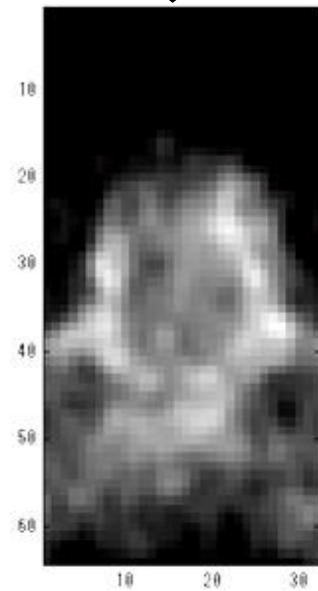
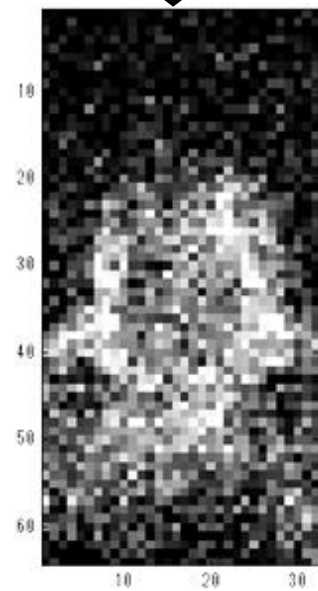
=

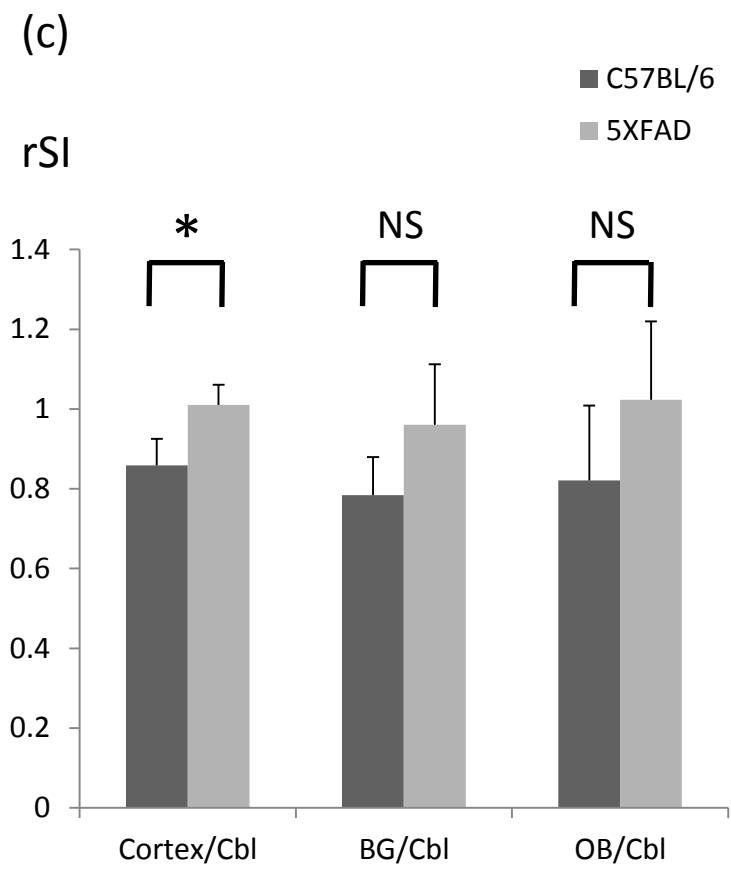
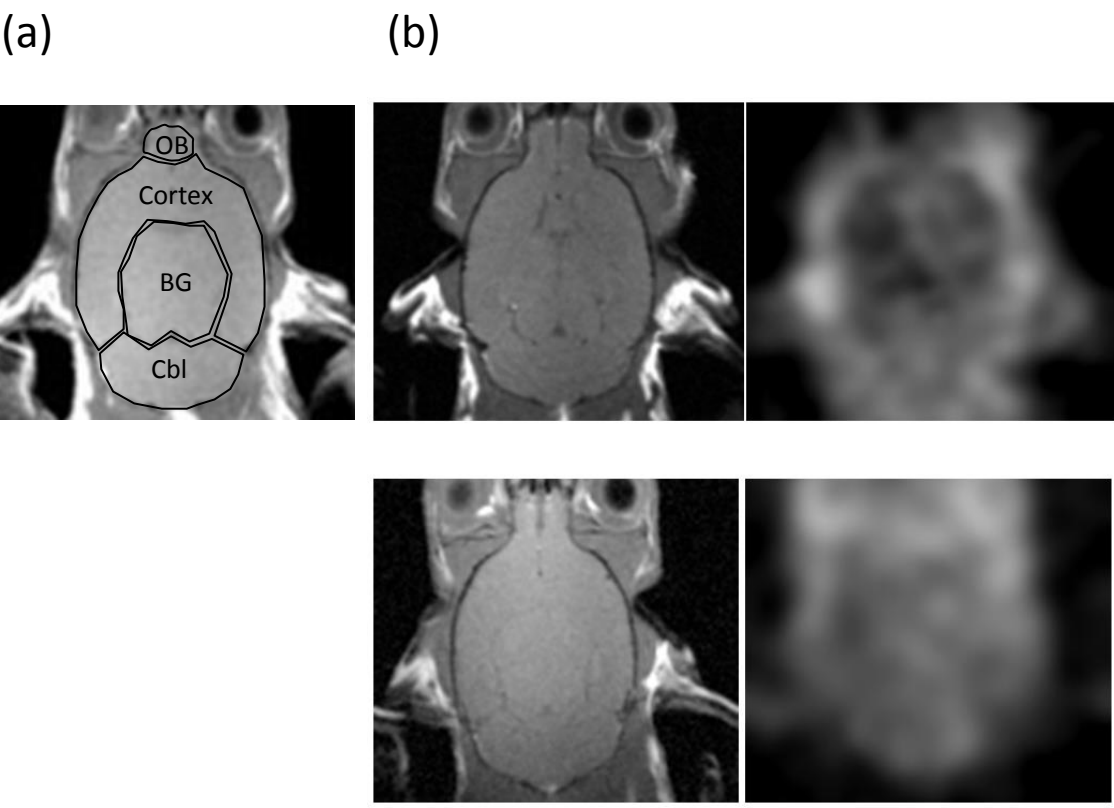


Zerofilling

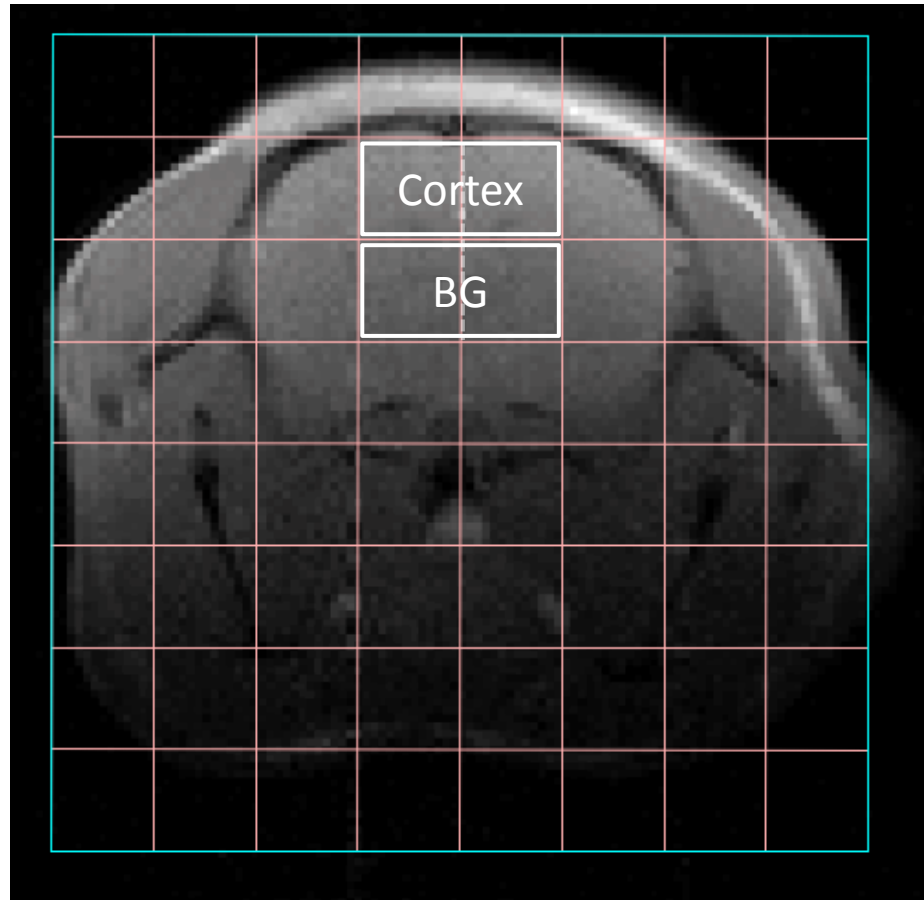


2D Discrete Fourier Transformation





(a)



(b)

